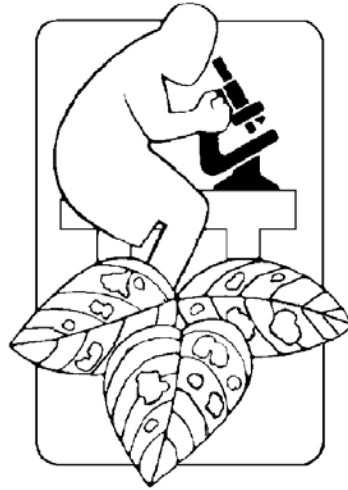


Pesticide Registrations in Oregon and Washington Berry Crops

May 1, 2006



Prepared by:
Joe DeFrancesco
Oregon State University
Department of Horticulture
Integrated Plant Protection Center
2040 Cordley Hall
Corvallis, Oregon 97331-2915
541-737-0718
defrancj@hort.oregonstate.edu

This document is just a guide and not intended as a recommendation or endorsement of the pesticides listed within. Pesticide registrations and labels are subject to change. Consult with your supplier, field representative, pest consultant or OSU Extension Service prior to pesticide use.

Insecticides/Miticides

Name	Alternative Name	Strawberry	Raspberrv	Blackberry	Blueberrv	PHI (days)	REI (hours)
Acramite	Bifenazate	x	x*	x*		Straw = 1; Cane = 1 year	12
Actara	Thiamethoxam	x			x	3	12
Admire	Imidacloprid	x			x	Straw = 14; Blue = 7	12
Agri-mek	Abamectin	x				3	12
Asana XL	Esfenvalerate		x	x	x	Cane = 7; Blue = 14	12
<i>Beauveria bassiana</i>	Mycotrol	x	x	x	x	0	12
Brigade, Capture	Bifenthrin	x	x	x		Straw = 0; Cane = 3	12
Bt	DiPel, Javelin, MVP	x	x	x	x	0	4
Confirm	Tebufenozide		x	x	x	14	4
Cryolite Bait	Cryolite	x ^{o, w}	x ^{o, w}	x ^{o, w}	x ^{o, w}	3	12
Danitol	Fenpropathrin	x				2	24
Diazinon		x	x	x	x	Cane = 7; Blue =7; Straw = 5	Straw = 3 days Cane & Blue = 5 days
Esteem	Pyriproxyfen	x ^s			x ^s	Straw = 2; Blue = 7	12
Guthion	Azinphos-methyl		x	x		7	7 days
Imidan	Phosmet				x ^{o, w}	3	24
Intrepid	Methoxyfenozone	x ^s				3	4
Kanemite	Acequinocyl	x				1	12
Kelthane, Dicofol	Dicofol	x				Kelthane =3; Dicofol = 2	12
Lannate	Methomyl	x			x	Straw: fresh=3, process=10; Blue=3	48
Lorsban	Chlorpyrifos	x				21	24
Malathion		x	x	x	x	Cane & Blue = 1; Straw = 3	12
Metasystox-R	Oxydemeton-methyl	x ^w	x ^{w, *}	x ^{w, *}		Straw = pre-bloom; Cane = 1 year	48
Naled	Dibrom	x				1	48
Neem	Aza-Direct, Neemix	x	x	x	x	0	4
Nemacur	Fenamiphos	x	x			Straw =110; Rasp = 6 months	48
Oberon	Spiromesifen	x				3	12
Platinum	Thiamethoxam	x			x	Straw = 50; Blue = 75	12
Provado	Imidacloprid	x			x	Straw = 7; Blue = 3	12
Pyrethrin	Pyganic	x	x	x	x	0	12
Rotenone	Pyrellin	x	x	x	x	0	12
Savey	Hexythiozox	x	x	x		3	12
Sevin	Carbaryl	x	x	x	x	7	12
Soaps	Safer, M-Pede	x	x	x	x	0	12
Success, Entrust	Spinosad	x	x	x	x	Straw = 1; Blue = 3, Cane = 1	4
Thiodan, Thionex	Endosulfan	x			x	Straw = 4; Blue = postharvest	48/24
Vendex	Hexakis	x	x			Straw = 1; Rasp = 3	48
Zeal	Extoxazole	x				1	12

* = Non-bearing only; ^s = Supplemental label, ^o = SLN Registration (24c) for Oregon, ^w = SLN Registration (24c) for Washington

Fungicides

Name	Alternative Name	Strawberry	Raspberry	Blackberry	Blueberry	PHI (days)	REI (hours)
Abound	Azoxystrobin	x	x	x	x	0	4
Aliette	Fosetyl-al	x	x	x	x	Straw & Blue = 0; Cane = 60	12
Bravo	Chlorothalonil				x	42	12
Cabrio	Pyraclostrobin	x	x	x	x	0	24
Captan		x	x	x	x	Straw & Blue = 0; Cane = 3	4 days; Strb=24hr
Captevate	Captan + fenhexamid	x	x		x	Straw & Blue = 0; Rasp = 3	Straw =24 Blue & Rasp =72
Coppers	Kocide, Champ, etc.	x	x	x	x		24/48
Elevate	Fenhexamid	x	x ^s	x ^s	x ^s	0	12
Fosphite, Phostrol	Phosphorous acid	x	x	x	x		4
Lime Sulfur	Calcium Polysulfide	x	x	x	x	Delayed dormant use	4/24/48
Oil	BioCover; Sun; JMS	x	x	x	x	Delayed dormant or postharv.	4
Potassium bicarb.	Kaligreen, Milstop	x	x	x	x	1	4
Procure	Triflumizole	x				1	12
Pristine	Boscalid+pyraclostrobin	x	x	x	x	0	24
Quadris	Azoxystrobin	x				0	4
Rally	Myclobutanil	x	x	x		0	24
Ridomil Gold	Mefenoxam	x	x		x	Rasp=45; Blue=0; Straw = 30	48
Rovral	Iprodione	x	x	x	x	0; Strawberry = prebloom	24
Scala	Pyramethanil	x				1	12
Serenade	<i>Bacillus subtilis</i>	x	x	x	x	0	4
Sulfur	Thiolux; Microthiol sp.	x	x	x	x		24
Syllit	Dodine	x				14	48
Switch	Cyprodinil+fludioxonil	x	x	x	x	0	12
Thiram		x				3	24
Topsin-M	Thiophanate methyl	x				1	12
Ziram				x	x	See label	48
Other							
Bird Shield; ReJex-iT	Methyl Anthranilate				x	6	
Deadline, others	Metaldehyde	x	x	x	x	6	12
Dormex	Hydrogen cyanamide				x	Dormancy application	72
Ethrel	Ethephon			x	x	Black = 3; Blue = 7	48
Messenger	Harpin protein	x	x	x	x	0	4
Prev-Am		x	x	x	x	12 hours	12
Prozap Z-P Pellets	Zinc Phosphide		x	x	x	70	24
Sluggo	Iron Phosphate	x	x	x	x	0	0

* = Non-bearing only, ^s = Supplemental label, ^o = SLN Registration (24c) for Oregon, ^w = SLN Registration (24c) for Washington

Herbicides

Name	Alternative Name	Strawberry	Raspberry	Blackberry	Blueberry	PHI (days)	REI (hours)
2,4-D amine	Formula 40, Saber	x			x ^{o, w}	Straw = dormant; Blue = 30	48
Aim	Carfentrazone	x	x	x	x	Cane = 15; Blue = 1; Straw = 0	12
Basagran	Bentazon		x ^{s, *}	x ^{s, *}	x ^{s, *}	365	48
Casoron	Dichlobenil		x	x	x	30; avoid new shoot emerge	12
Cobra	Lactofen	x ^{*, o, w}				365	12
Dacthal	DCPA	x				Use pre bloom	12
Devrinol	Napropamide	x	x	x	x	Spring or fall use	12
Fusilade	Fluazifop	x [*]	x [*]	x [*]	x [*]	365	12
Gallery	Isoxaben		x [*]	x [*]	x [*]	365	12
Goal	Oxyfluorfen		x ^{o, w}	x ^{o, w}		Rasp = 50; Blackb. = 15	24
Gramoxone	Paraquat	x	x	x	x	Avoid new shoot growth	12
Karmex	Diruon		x	x	x	Late spring or fall use	12
Kerb	Pronamide		x	x	x	Fall or winter use	24
Poast	Sethoxydim	x	x	x	x	Straw =7; Cane =45; Blue=30	12
Prism/Select	Clethodim	x	x [*]	x [*]	x [*]	Straw=4 days; others = 365	24
Prowl	Pendimethalin	x ^{*, o, w}				365	24
Rely	Glufosinate				x	14	12
Roundup, others	Glyphosate		x	x	x	14	4
Scythe	Pelargonic acid	x	x	x	x		24
Simazine	Princep	x	x	x	x	Spring or fall use	12
Sinbar	Terbacil	x ^s	x	x	x	Straw & Blue = spring or fall use Cane = 70 days	12
Solicam	Norflurazon		x	x	x	60	12
Stinger	Clopyralid	x ^{o, w}				30	12
Surflan	Oryzalin		x	x	x	Spring or fall use	12
Velpar	Hexazinone				x ^s	90	24

* = Non-bearing only, ^s = Supplemental label, ^o = SLN Registration (24c) for Oregon, ^w = SLN Registration (24c) for Washington